

KARTT PROFESSIONAL Limited Warranty

The Kartt range of products are known for their quality and reliability. We are committed to ensuring our customers can use our products confidently.

It is essential that each of our products is used in accordance with its limitations. Please familiarise yourself fully with the operating instructions and guidelines and ensure you wear appropriate safety equipment for your protection.

Kartt shall not be responsible or liable for any indirect or consequential damages
12 month Warranty

- The Kartt range of Pundmann winches is supplied with a 12 month limited warranty
- The warranty applies to the original buyer of the equipment
- It is subject to the products having been correctly installed by an approved installer
- The winch must be used in line with the operating guidelines, with a reliable power supply and not have been subject to inappropriate applications.

This warranty excludes:

- Cosmetic defects such as paint, decals, etc,
- Worn parts including steel/synthetic ropes
- Any Accessory part including roller fairleads, hooks, mounting plates, transmitter, isolator switches
- Failures due to acts of God and other force majeure events beyond the manufacturer's control
- Problems caused by parts that are not original part
- Alteration or modification(s) made by any party other than the manufacturer.
- Any electrical cables & wireless remote systems
- Any third party equipment
- Batteries

Terms of Warranty

Kartt will offer to repair or replace any parts which Kartt find to be defective.

Kartt will repair or replace with a similar item, of a similar age and do not offer a new for old warranty

The warranty does not cover shipping costs or labour costs incurred by the warranted party.

INSTALLATION & MANUAL GUIDE

KARTT

4500 lb / 20kN



2, Adams Close

Woburn Road Industrial Estate
Kempston, Bedford, MK42 7JE

Email:- sales@kartt.co.uk

Web:- www.kartt.com

SAFETY PRECAUTIONS

The responsibility for safe installation and operation of this winch ultimately rests with you, the operator. Please read and understand all of the safety precautions and operating instructions before installing and operating the winch. Careless winch operation can result in serious injury and/or property damage. Never obscure or remove the warning or instruction labels which are there for your safety and the safety of any other users.




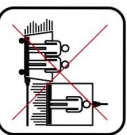

▲ DANGER Indicates an imminently hazardous situation which, if not avoided, will result in death or serious injury.

▲ WARNING Indicates a potentially hazardous situation which, if not avoided, could result in death or serious injury.

▲ CAUTION Indicates a potentially hazardous situation which, if not avoided, may result in minor or moderate injury. This notation is also used to alert against unsafe practices.

Note: Indicates additional information in the installation and operation procedures of your winch.

THE FOLLOWING SYMBOLS ARE USED ON THE PRODUCT AND IN THE OWNER'S MANUAL

				
Refer to Owners manual	Always use handsaver strap for safety	Maintain a safe distance from the winch, Rope and Load	Under no circumstances utilize a Winch to lift and/or move People or Animals	Under no circumstances apply the use of a Winch to secure a load

Correct installation of your winch is a requirement for proper operation.

Please Note: This winch is equipped with a permanent magnet motor and is designed primarily for intermittent applications. This winch is not designed to be used in industrial or lifting / hoisting applications and NEVER should be used for moving people. Improper use could damage your winch and void your warranty.

The freespool clutch is operated by rotating the freespool handle clockwise from "ENGAGED" to "FREESPOOL" which disengages the gear box. The wire / synthetic rope can then be pulled out using a hand-saver strap or bar.

KARTR

WORKHORSE
PROFESSIONAL WINCHES



KARTRT

COMMON WINCH ACCESSORIES



#21 for 4500
WKS001



Wired/Wireless remote for 12V
4500, 9500, 11500 winches
WKS004



Battery Isolator Switch / **WKS013**



4500
WKS007

Winch Covers



for 4500 lb winches / **WKS010**

a. This winch must NEVER be used for moving people or for moving loads above people. Items should not be lifted vertically. Pundmann does not warrant this winch to be suitable for such uses. This winch is designed for movement of loads on the ground only.

b. **DO NOT OVERLOAD.** Be sure that any item to be moved falls within the maximum line pull rating of the winch. The use of a pulley block is recommended to double line the wire rope and reduce the load on the winch, on the rope (steel or synthetic), on the motor and on the battery. Where used, the pulley block should be rated to a minimum of twice the winch's line pull rating. **SEE FIGURE 1**

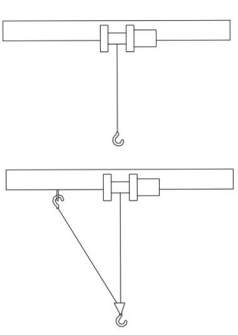


Figure 1

c. Use the winch intermittently and never more than for one minute. Do not use in a constant duty application. If the winch motor becomes very hot to the touch, stop the winching application and allow the winch motor to cool down for several minutes.

d. **DO NOT** operate the winch with less than 5 turns of the rope around the drum as the end of the wire rope might not withstand the full applied load.

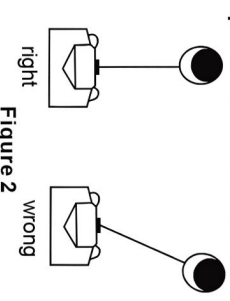


Figure 2

e. Avoid continuous pulls from extreme angles as this might cause the wire rope to gather on one end of the drum and damage the wire rope. **SEE FIGURE 2.**

f. Note that the stated Maximum Pulling Force is the maximum load pull on the first layer of rope. Never operate the winch beyond its Maximum Pulling Force.

g. Never hook the wire rope back on itself as this can damage the rope. Use a nylon sling when using an anchor point such as a tree. **SEE FIGURE 3.**

h. Always check the winch mounting before use, to ensure that bolts are not loose and everything is secure.

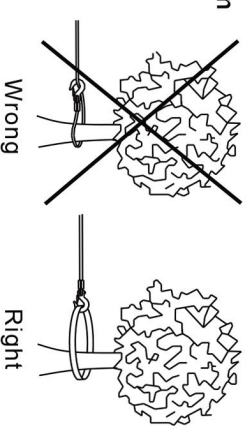


Figure 3

i. Always inspect the wire rope when extended and before use. Prevent kinks in the rope as this will reduce the capacity and weaken it. Ensure that the rope is wound back on to the drum under tension of around 100lbs / 50kg and avoid uneven layering.

j. When you have attached the hook to the load, it is important to place a wire dampener / blanket / heavy coat over the wire, near the hook end, so that in the event of a hook / rope / attachment point failure, the energy of the rope is directed towards the ground and will help to prevent serious injury or damage. **SEE FIGURE 4.**

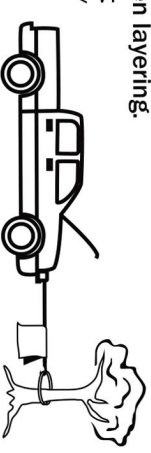


Figure 4

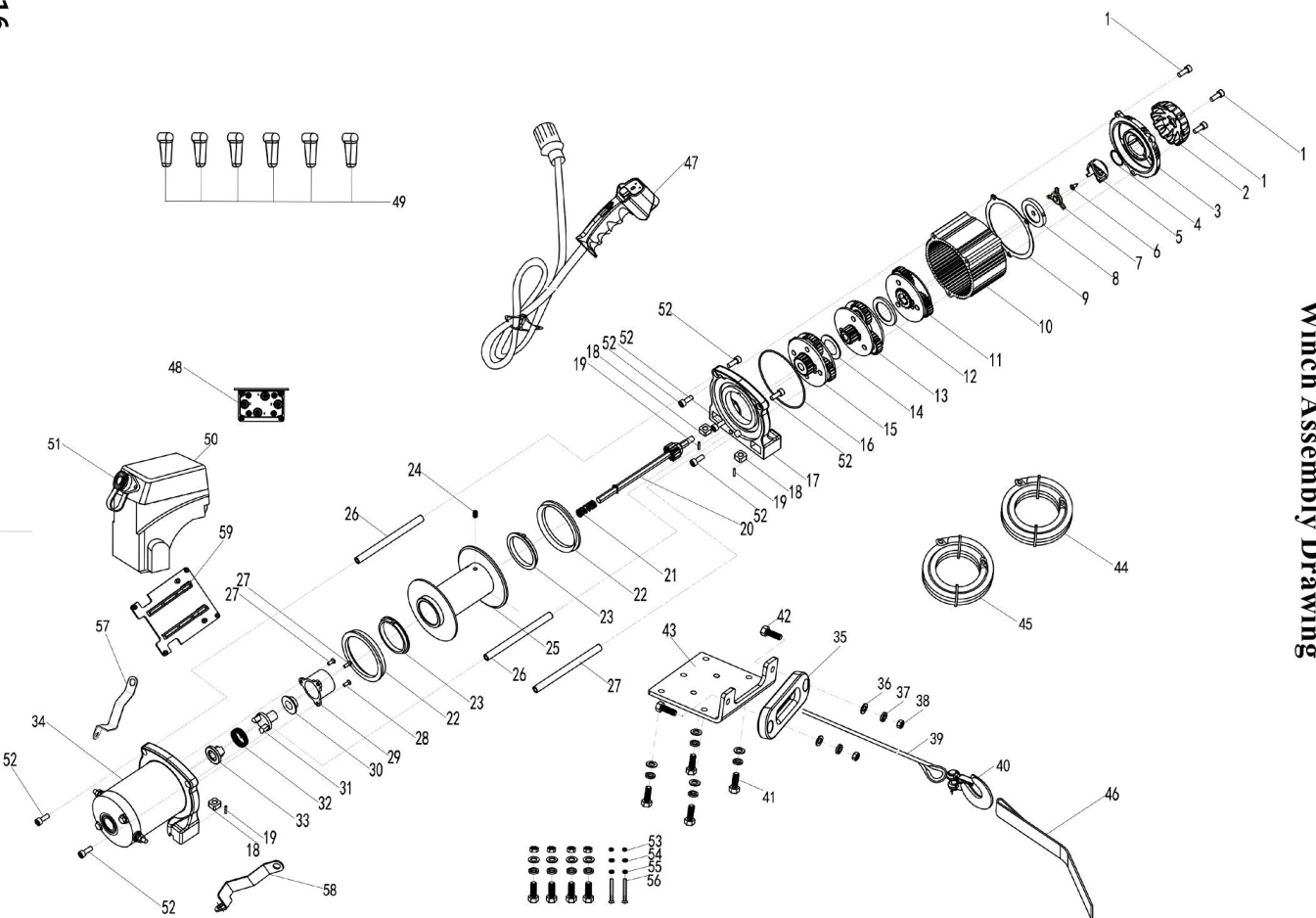
- k. DO NOT use the vehicle to assist the winch in moving a load. Overloading could easily occur and cause damage to the winch and / or rope.
- l. DO NOT approach the winch, the rope or the pulley block when operating the winch. Beware of the "Danger Zone", those areas around the winch, fairlead, rope, hook and pulley block (where used) and motor.
- m. Do not straddle or step over the rope when it is under load and / or in use. Operate the winch at a safe distance using the handheld controller and wanderlead or a remote control device.
- n. Before operating the winch ensure that the vehicle transmission is in neutral and the handbrake lever is applied. Chock the wheels. Ensure that the vehicle engine is running during winch operation ensuring that the battery is at full power. Never use the winch in a situation where there is insufficient voltage / power.
- o. DO NOT disconnect the freespooling clutch when the rope is under load.
- p. After bringing the load to its safe position and securing it in place, release the tension from the rope and the winch. Do not use the winch to keep the load in position.
- q. Inspect the winch, rope, hook and other accessories frequently. Replace damaged, kinked or frayed ropes immediately as their loadbearing capacity will have been compromised. Use heavy leather gloves when handling wire rope and even then do not allow the wire rope to slide through your hands. Replacement wire rope should be respoiled under a load of around 100lbs / 50kg.
- r. Having disconnected the clutch, always use the hand saver when freespooling the rope. Do not put your finger through the hook in order to pull the rope.
- s. Do not operate the winch when under the influence of medication, alcohol or drugs. Keep alert when operating the winch. If something appears or sounds to be wrong, cease operation, turn off the winch and check it carefully.
- t. If the movement of the load that is being winched appears to be restricted, do not try to use the power of the winch to overcome the blockage. Cease operation and check carefully what might be restricting the movement. Without putting yourself at risk clear the restriction and then start again.
- u. Always use Personal Protective Equipment when operating the winch, including eye protection, heavy leather gloves, steel toe-capped boots or shoes with anti-slip soles and appropriate work wear (long trousers and long sleeved jacket). Ensure the long hair is tucked away and avoid wearing jewellery (rings and necklaces) that might get caught when operating the winch.
- v. DO NOT machine or weld any part of the winch or its components.
- w. Even if the winch is not in use for long periods of time, ensure that it remains in working order so that it is ready when it is needed. If possible, use a winch cover to protect against road salts and dirt. Periodically check the operation of the winch

AFTER READING AND UNDERSTANDING THIS MANUAL, LEARN TO USE YOUR WINCH.
After installing the winch, practice using it so that you will be familiar with it when the need arises.

4500 Synthetic / Parts list

Item #	Description	Quantity
1	Hexagon socket head cap screw M6 X 16	3
2	Clutch knob	1
3	Cover of gear box	1
4	O Ring φ26x1.5	1
5	Clutch knob base	1
6	Screw M4x8	1
7	Fork pin	1
8	bearing	1
9	Gasket ring	1
10	gear box housing	1
11	1st stage planetary gear	1
12	spacer	1
13	2nd stage planetary gear	1
14	spacer	1
15	3rd stage planetary gear	1
16	O Ring φ98.6x95x1.8	1
17	Gear box Base	1
18	Nut M8x14x8	4
19	Elastic Pin	4
20	Shaft Assy	1
21	Spring	1
22	Gasket ring	2
23	Nylon bearing	2
24	Screw M6x8	1
25	Drum	1
26	The bar	2
27	Bottom tie bar	1
28	Screw M4x10	3
29	Brake house	1
30	Brake caliper	1
31	Locating ring	1
32	Spring	1
33	Brake base	1
34	Motor	1
35	aluminum hawse	1
36	Washer φ8	10
37	Lock washer φ8	10
38	Nut	6
39	synthetci rope	1
40	Hook 1/4"	1
41	Hex screw M8x25	8
42	Hex screw M8x20	2
43	Mounting plate	1
44	Power lead "+"	1
45	Power lead "-"	1
46	Hand saver	1
47	Remote control	1
48	Solenoid	1
49	rubber boot	6
50	Control box cover	1
51	Socket cover	1
52	Hexagon socket head cap screw M6 X 18	7
53	Nut M8	2
54	Washer φ4	2
55	lock washer φ4	2
56	Phillip's head screw M4	2
57	control box bracket left	1
58	control box bracket Right	1
59	Control box bottom plate	1

4500 Synthetic Winch Assembly Drawing



INSTALLATION

1. Mount the winch on to the vehicle, trailer or other fixed installation by using the hardware provided. Bolts (M8 x 30mm), Nuts (M8), Washers (8mm dia) and Spring Washers (8mm dia).

CAUTION This winch must be mounted with the rope in the under wound direction (Fig. 5) Improper mounting could damage your winch and void your warranty.

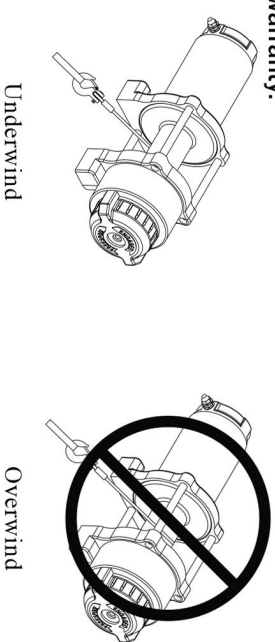


Fig 5

Note: Your winch is designed to ROPE IN and ROPE OUT in one direction. Do not attempt to reverse the operation of your winch.

WARNING: Before you start your winch installation, disconnect your vehicle earth and positive leads from the battery.

MINIMUM ELECTRICAL REQUIREMENTS.

20kN (4500lbs) winch. Be sure to select the battery or power supply that is appropriate for this winch. If the winch is in heavy use, an auxiliary battery and heavy duty alternator are recommended.

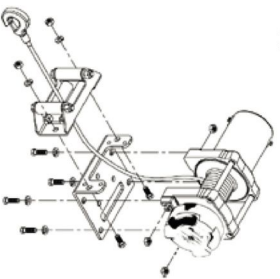
Under some circumstances, it may be appropriate to install additional circuit protection devices (circuit breakers). If in doubt seek appropriate advice.

Install a mounting kit or prepare a flat, secure mounting location for the winch to make sure that the motor, drum and gearbox are aligned correctly. Your winch is a very powerful machine. To protect yourself and properly be sure that the structural support is strong enough to support and withstand the high rated pulling capacity of the winch. If you choose not to use a mounting kit you will need to drill holes in the structural support. Be sure that this structural support is at least 5mm thick.

If not using the hardware supplied with the mounting kit, always use hardware which equals or exceeds the strength grade of the supplied hardware. Do not substitute any strength grade bolts weaker than SAE Grade 8 (ISO 10.9). Under no circumstances should the end of the mounting bolts touch the inside surface of the casting mount pockets. As you position the winch, make sure that the rope winds in the proper rotation of the drum. Your winch is intended to operate in one direction only. Failure to operate the winch in the proper direction can cause the winch brake (if equipped) to operate improperly and / or cause the winch to fail.

4500 / Parts list

Position the winch over the holes in the mounting kit or structural support.
Secure the winch to the mounting kit or structural support using the bolts, lock washers and square nuts supplied with the winch.



Secure the roller fairlead or hawse to the mounting plate or structural support using the hardware supplied.

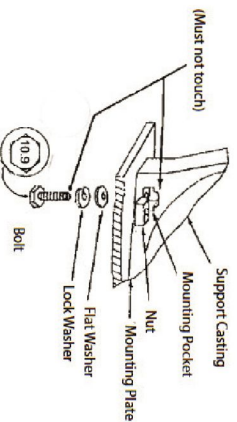
Be sure that all hardware securing the winch and the mounting plate has been properly tightened.

No part of the vehicle (skid plates, wiring, auxiliary lights, tyres etc) should impede the operation of your winch.

When mounting, check all vehicle and winch parts for free operation. Be sure that the winch mounting location does not significantly reduce ground clearance.

Do not weld or machine any part of the winch. Welding or machining may weaken the structural integrity of the winch and will void your warranty.

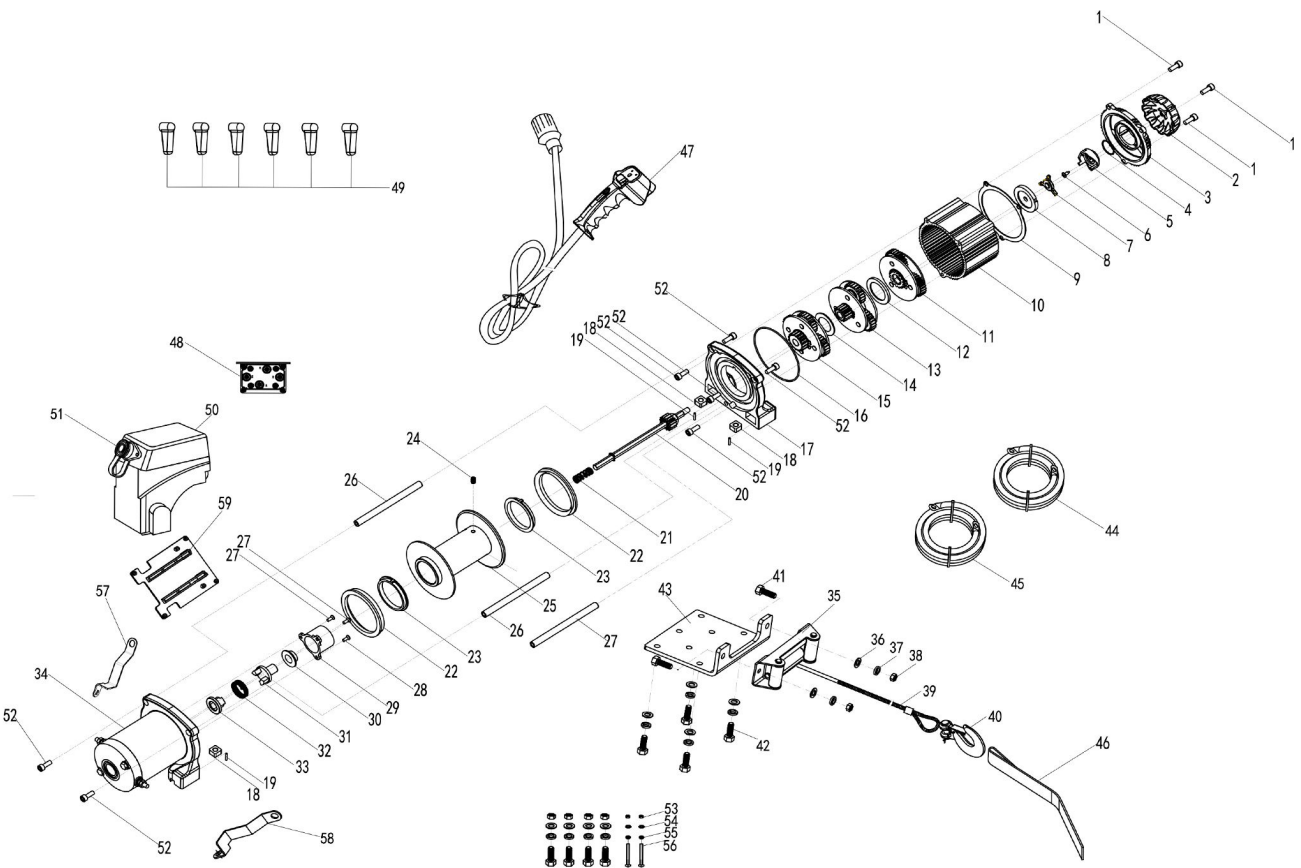
Mounting bolt threads must fully engage the nut but the bolt must not contact the opposite side of the nut pocket in the casting.



KARTT recommends that all the winch's electrical systems can be readily and quickly isolated from their electrical supply in the event of an emergency. The winch's electrical systems should always be isolated when the winch is not in use. Install a mounting kit or prepare a flat, secure mounting location for the winch to make sure that the motor, drum and gearbox are aligned correctly. Your winch is a very powerful machine. To protect yourself and properly be sure that the structural support is strong enough to support and withstand the maximum pulling capacity of the winch.

Item #	Description	Quantity
1	Hexagon socket head cap screw M6 X 16	3
2	Clutch knob	1
3	Cover of gear box	1
4	O Ring φ26x1.5	1
5	Clutch knob base	1
6	Screw M4x8	1
7	Fork pin	1
8	bearing	1
9	Gasket ring	1
10	gearbox housing	1
11	1st stage planetary gear	1
12	spacer	1
13	2nd stage planetary gear	1
14	spacer	1
15	3rd stage planetary gear	1
16	O Ring φ98.6x95x1.8	1
17	Gear box Base	1
18	Nut M8x14x8	4
19	Elastic Pin	4
20	Shaft Assy	1
21	Spring	1
22	Gasket ring	2
23	Nylon bearing	2
24	Screw M6x8	1
25	Drum	1
26	Tie bar	2
27	Bottom tie bar	1
28	Screw M4x10	3
29	Brake house	1
30	Brake caliper	1
31	Locating ring	1
32	Spring	1
33	Brake base	1
34	Motor	1
35	Roller fairlead	1
36	Washer φ8	10
37	Lock washer φ8	10
38	Nut	6
39	Wire rope	1
40	Hook 1/4"	1
41	Hex screw M8x25	8
42	Hex screw M8x20	2
43	Mounting plate	1
44	Power lead "+"	1
45	Power lead "-"	1
46	Hand saver	1
47	Remote control	1
48	Solenoid	1
49	rubber boot	6
50	Control box cover	1
51	Socket cover	1
52	Hexagon socket head cap screw M6 X 18	7
53	Nut M8	2
54	Washer φ4	2
55	Lock washer φ4	2
56	Phillip's head screw M4	2
57	control box bracket Left	1
58	control box bracket Right	1
59	Control box bottom plate	1

4500 lb steel cable Winch Assembly Drawing



2. Electrical connections for an ATV winch without a control box.

Route the two lines from the switch to the motor and battery respectively. Connect the red cable to the positive (1) terminal of the battery and the black line to the negative (2) terminal of the battery. (See Fig. 6 below.)

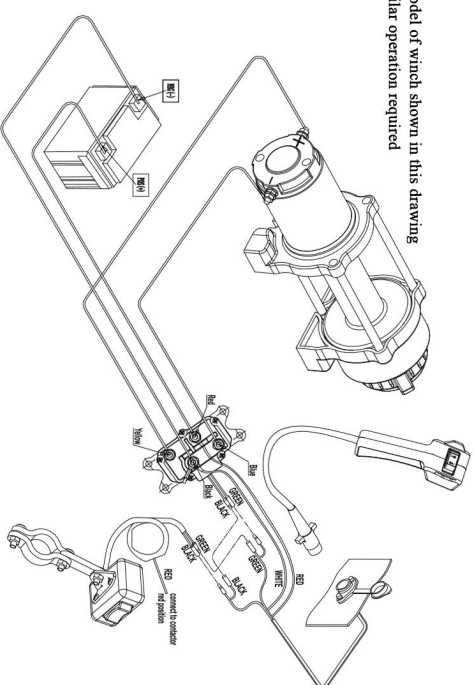


Fig. 6

* note old model of winch shown in this drawing though similar operation required

3. Electrical connections for an ATV winch with a control box. Connect the red cable to the positive (1) terminal of the battery and the black line to the negative (2) terminal of the battery. (See Fig. 7 below.) Where a "rocker switch" is supplied, plug the rocker switch in to the socket on the control box.

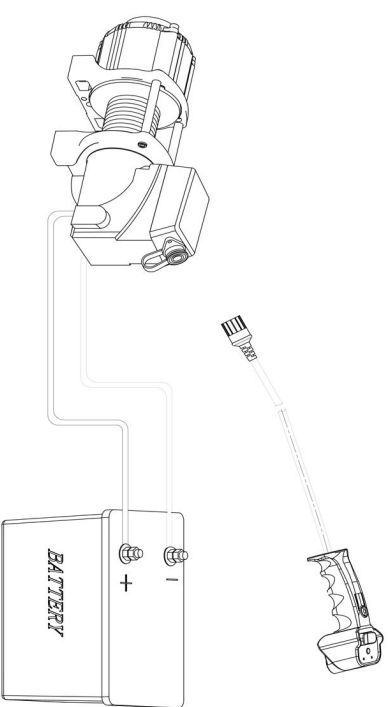
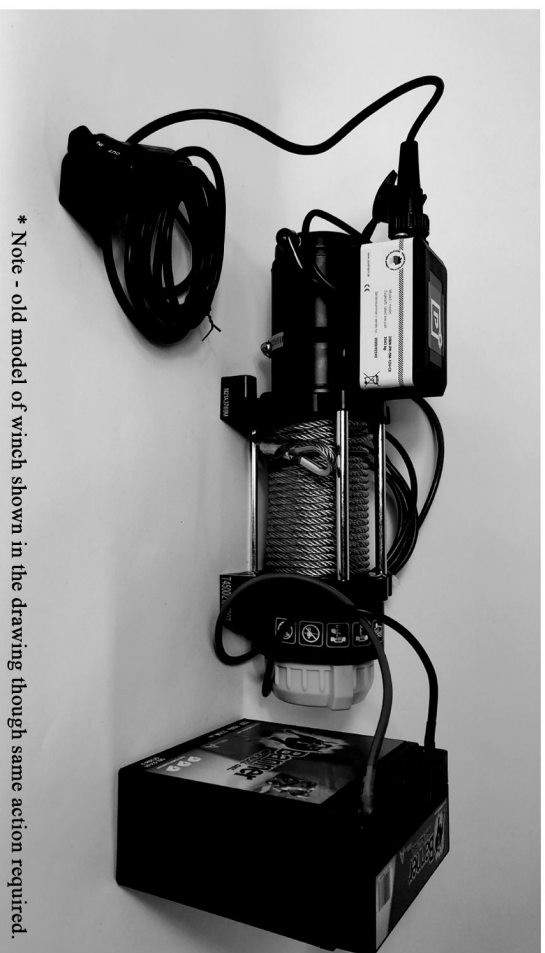


Fig. 7

4. Electrical connections for a trailer winch with a control box. Connect the red cable to the positive (1) terminal of the battery and the black line to the negative (2) terminal of the battery. (See Photo below.).



Having made the connection to the battery in any of the examples shown above (2,3 or 4), now check the direction of rotation of the drum. Rotate the freespooling handle clockwise from "ENGAGED" to "FREESPOOL" so that the drum can be turning freely. Pull out some cable from the drum and then turn the clutch knob (freespooling handle) to the "IN" position. Press the "Cable Out" button on the handheld controller. If more cable is releasing from the drum then the electrical connections are correct. If not, then turn off the power to the winch and check all connections. Automotive batteries contain gasses which are explosive. Wear eye protection during installation and remove all metal jewellery. Do not lean over the battery whilst making connections. Disconnect the negative and positive leads from the vehicle battery. Route the long red and black colour coded wires to the battery. To ensure insulation abrasion and/or cutting, apply several layers of electrical tape where wiring may come in to contact with sharp parts on the vehicle. Attach the red

Technical Specs

4500 lb synthetic rope

P/N WP72135B

Max pulling force 2041 kg

Supply voltage: 12 V

Gearing: 3-stage planetary

Gear ratio: 266:1

Clutch lever: manual

Brake: automatic 100% Load Holding

Rope: wire 5.5mm x 15.2m

Remote: wired & wireless

Installed weight: 13.2 kg

Gross/Shipping weight: 14.1 kg

Certificate: CE

ROPE SPEED | POWER CONSUMPTION IN A

Line Pull 0 kg 7.35 m/min, 26A

Line Pull 2041 kg 1.65 m/min, 238A

INCLUDES

Winch

Roller fairlead

Wire cable with hook

Wired/wireless hand held remote

control

Hand held switch

RECOMMENDED ACCESSORIES

Neoprene winch cover

Mounting Plate P/N WKS010

Bolt Hole Mounting Centres 76mm x

168

Outer Case Dimensions 44.5 x 26.5 x 28.5cm

Technical Specs

4500 lb steel cable

P/N WP72133B

Max pulling force 2041 kg

Supply voltage: 12 V

Gearing: 3-stage planetary

Gear ratio: 266:1

Clutch lever: manual

Brake: automatic 100% Load Holding

Rope: wire 5.5mm x 15.2m

Remote: wired & wireless

Installed weight: 13.2 kg

Gross/Shipping weight: 14.1 kg

Certificate: CE

ROPE SPEED | POWER CONSUMPTION IN

A

Line Pull 0 kg 7.35 m/min, 26A

Line Pull 2041 kg 1.65 m/min, 238A

INCLUDES

Winch

Roller fairlead

Wire cable with hook

Wired/wireless hand held remote control

Hand held switch

RECOMMENDED ACCESSORIES

Neoprene winch cover

Mounting Plate P/N WKS010

Bolt Hole Mounting Centres 76mm x 168

Outer Case Dimensions 44.5 x 26.5 x 28.5cm

colour coded wire to the positive battery terminal and reattach the terminal to the battery. If your vehicle is equipped with side pole terminals, it may be necessary to obtain auxiliary side terminal bolts from your local auto parts dealer to make these connections. Connect the black colour coded wire to the negative battery terminal, then connect the terminal to the battery.

OPERATION

- Rotate the freespooling handle clockwise from "ENGAGED" to "FREESPOOL" so that the drum can turn freely by hand.
- USING THE HANDSAVER STRAP OR BAR and at all times wearing heavy duty gloves, pull the hook and cable towards the load and attach securely. NOTE, check that there are at least 5 turns of the cable left on the drum before operation.
- Rotate the freespooling handle anticlockwise to the "ENGAGED" position. This will mesh the drum with the gears and now the drum cannot be turned by hand. CAUTION:- the clutch must be fully engaged before winching. Never try to operate the freespooling handle whilst the drum is turning. Do NOT try to readjust the freespooling handle as it has been factory set and permanently locked in place with a thread locking compound.
- Press the "CABLE IN" button on the handheld controller and the cable will pull the load towards the winch, the cable itself will respool on to the drum. Constantly monitor the cable as it is respooling on to the drum to ensure that it is spooling evenly across the drum and not leaving gaps between turns. Press the "CABLE OUT" button to reverse direction but wait until the motor stops before doing this.
- When the load has reached its optimum position, secure the load and then (only then) remove the hook and respool the rest of the cable. Under no circumstances should you use the winch to secure the load.

FOR RIGGING AND PULLEY BLOCK GUIDANCE, PLEASE REFER TO THE USER GUIDE THAT IS PROVIDED WITH THE PACKAGE.

OPERATION OF THE HANDHELD CONTROLLER

The handheld control switch (sometimes called the pendant) activates a solenoid which sends power to the winch motor. To connect the handheld controller, remove the cover on the plug holder and insert the plug end of the remote switch. The plug on the handheld control cord is keyed and will fit into the socket only one way.

The switch trigger returns to the "Off" position when released. To change direction, move the toggle in the other direction.

▲ CAUTION The switch assembly must be kept free of dirt and moisture to ensure safe operation.

▲ WARNING The wire rope may break before the winch stalls. For heavy loads use a pulley block to reduce the load on the wire rope.

▲ CAUTION If the winch motor stalls, do not continue to apply power to the winch.

▲ CAUTION To prevent unauthorised use of the winch, remove the handheld controller / pendant and store it in a clean dry area such as the vehicle glove box.

WIRED AND WIRELESS

Wired controller is supplied.

NOTE - wireless units will also work with this winch.

MAINTENANCE

- Before every use of the winch, check the tightness of the mounting bolts and the electrical connections. Remove all dirt or corrosion where found and always keep the winch clean. Use a winch cover where possible.
- DO NOT ATTEMPT to disassemble the gearbox. Repairs should be carried out by the manufacturer or authorised repair centre.
- The gearbox has been lubricated in the factory, at point of manufacture, using high temperature lithium grease. No internal lubrication is required.

TROUBLESHOOTING

SYMPTOM	POSSIBLE CAUSE	SOLUTION
Motor will not operate or runs in one direction only	-Switch inoperative -Broken wires or bad connection -Defective motor	-Replace switch -Replace wires, connect correctly and tighten the bolts/nuts -Replace or repair motor
Motor runs but drum does not turn	-Clutch not engaged	-Engage clutch
Motor runs but with insufficient power or line speed	-Weak battery -Defective motor	-Recharge or replace battery -Keep terminals clean, tighten or replace connective device -Repair or replace motor
Motor overheating	-Winch running for a long time -Defective motor	-Stop the operation and allow the motor to cool down -Repair or replace the motor